



Ensuring Laying Hen Welfare

INJURIOUS PECKING AND BEAK TRIMMING

MIA FERNYHOUGH

Welfare Impact

STANDARDS & FARM ASSURANCE



>20 million laying hens (2016)



Beak Trimming

RSPCA POSITION STATEMENT (2017 STANDARDS)

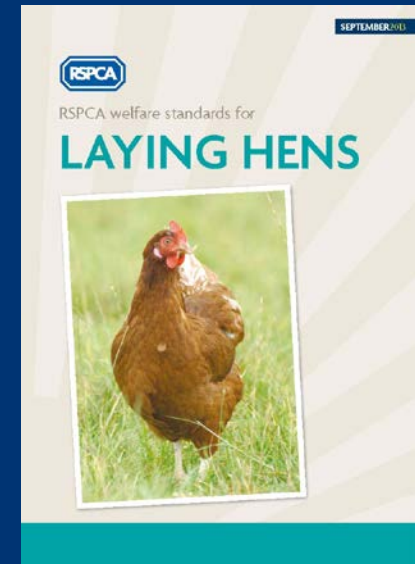
Beak trimming

i Beak trimming is against the principles of the RSPCA welfare standards. However, it is acknowledged that, at the current time, prohibiting beak trimming could result in a negative impact on welfare in some flocks.

The RSPCA will continue to work towards a phase-out of beak trimming and will work closely with the industry to help achieve this goal; including giving due consideration to all relevant research and practical aspects of laying hen and pullet rearing, nutrition and breeding that may impact on the issue.

In order to achieve a position where a ban on beak trimming could be implemented without a disproportionate risk to welfare, the underlying problem of injurious pecking will need to be effectively tackled. For this reason, producers placing beak trimmed flocks are required to implement a range of interventions, in addition to the existing management and enrichment standards, to help prevent injurious pecking behaviour.

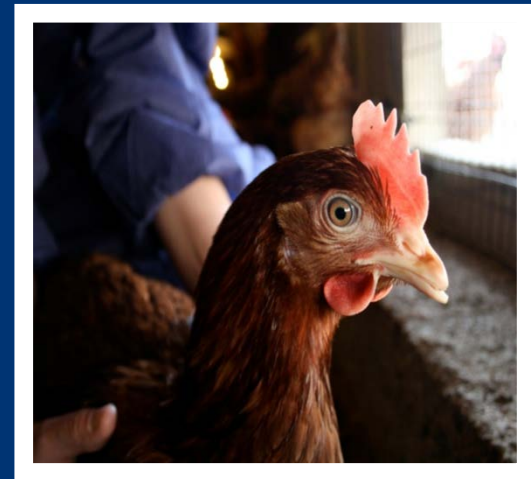
The RSPCA will continue to monitor levels of feather loss resulting from injurious pecking at a scheme level to assess progress.



Beak Trimming

KEY MESSAGES

- Against RSPCA principles
- Prohibition *could* be negative in *some* circumstances
- Intact production *is* possible
- Phase-out
- IRBT only



Beak Trimming

PHASE-OUT

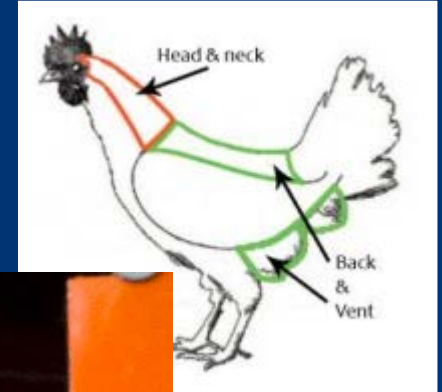
- Work with industry
- Strengthen standards
- Scientific advances & practical experience
- Monitor key welfare outcomes

Welfare Outcome Data

KEY MEASURES

WWW.ASSUREWEL.ORG

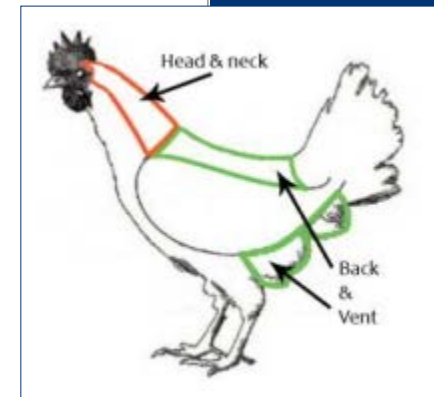
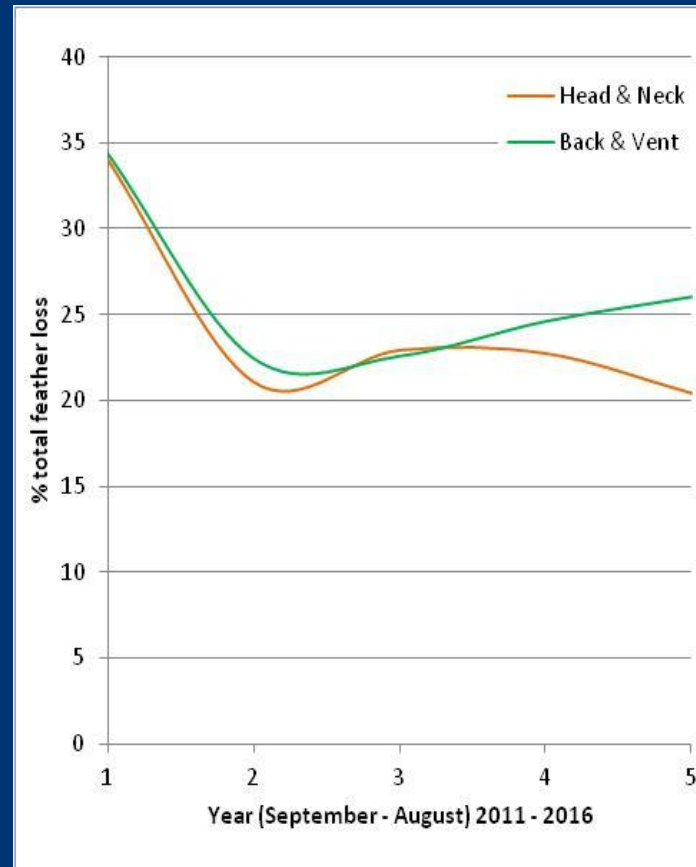
- Feather loss
- Agonistic interactions
- Mortality
- Beak status
- Flightiness



Welfare Outcome Scheme Data

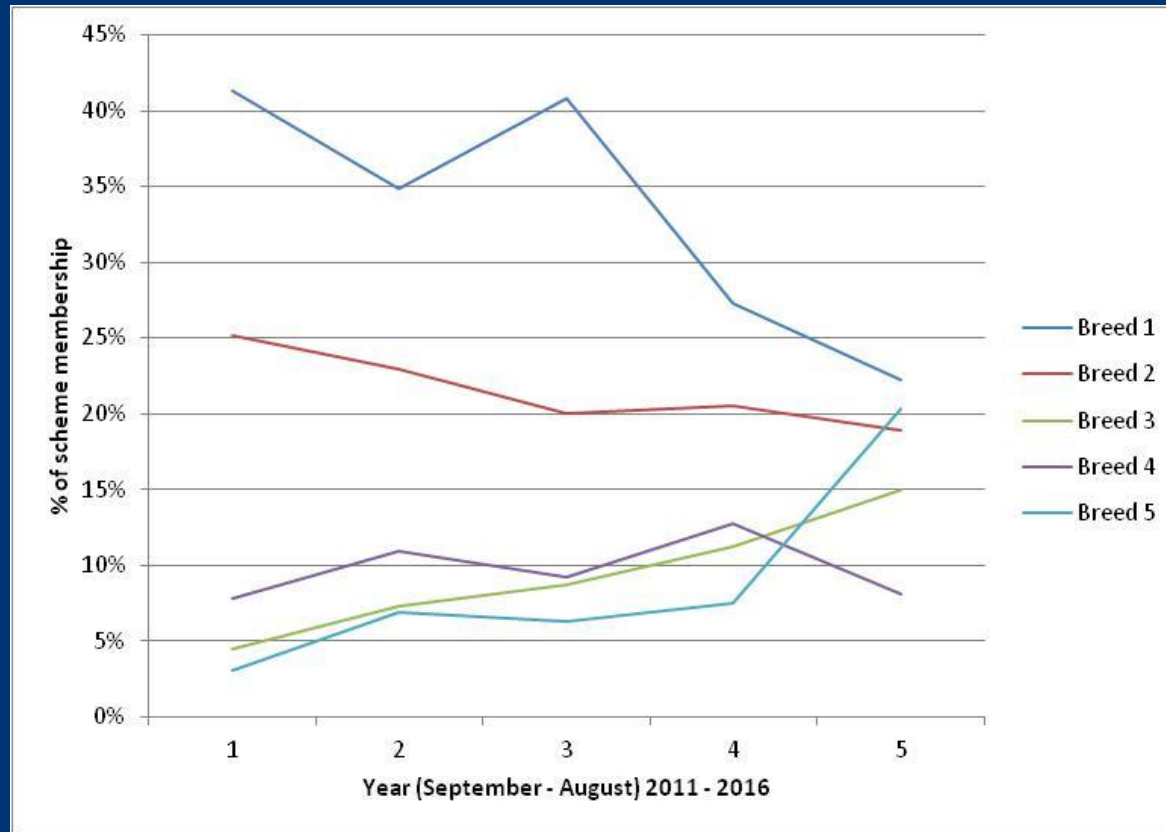
IDENTIFICATION OF RISK FACTORS, E.G. FOR FEATHER LOSS

- system
- breed
- flock size
- beak status
- range access
- rearing
- enrichment
- flightiness
- ?
- ongoing data analysis



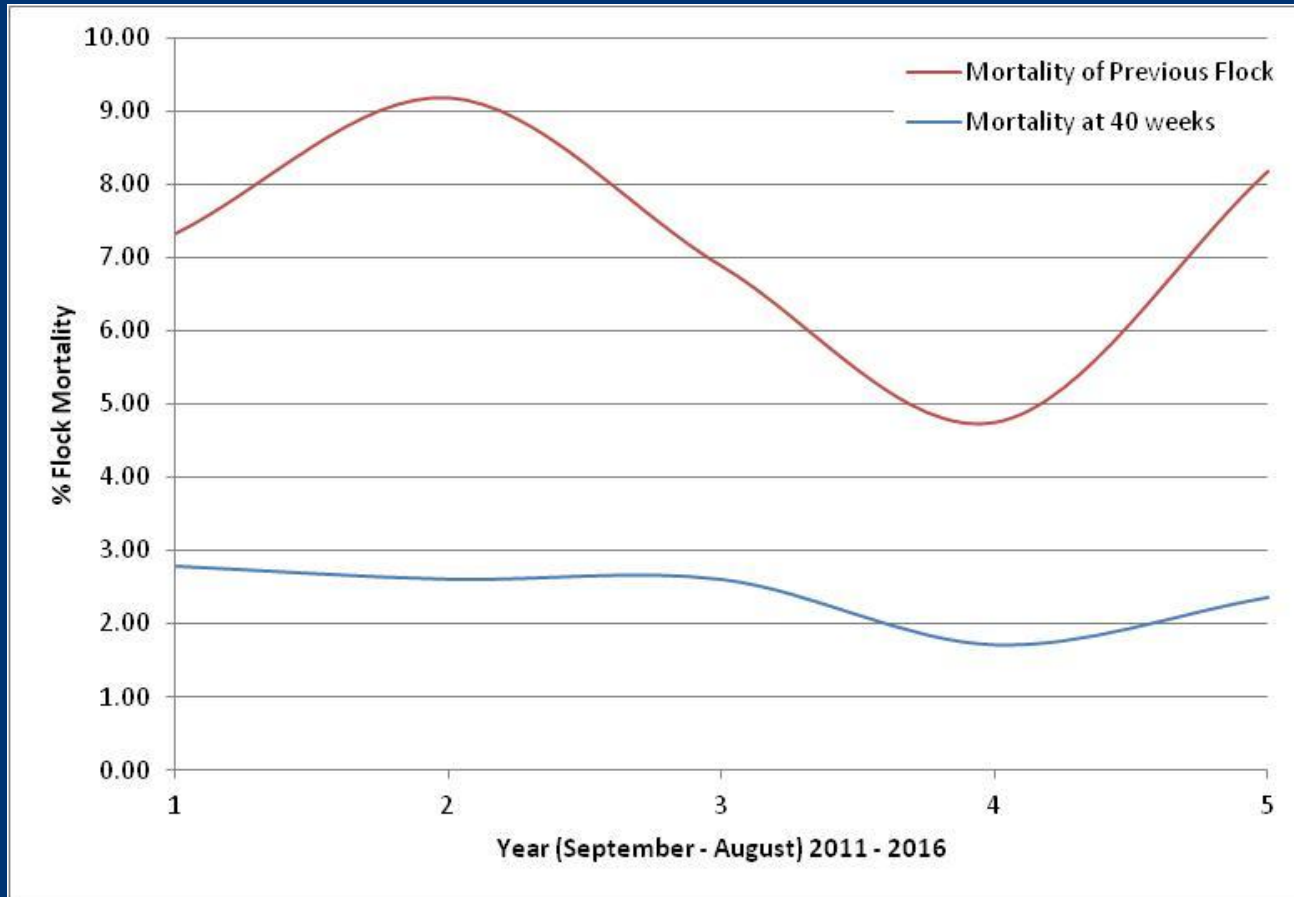
Breed Use

CONSIDERABLE CHANGE OVER 5 YEARS



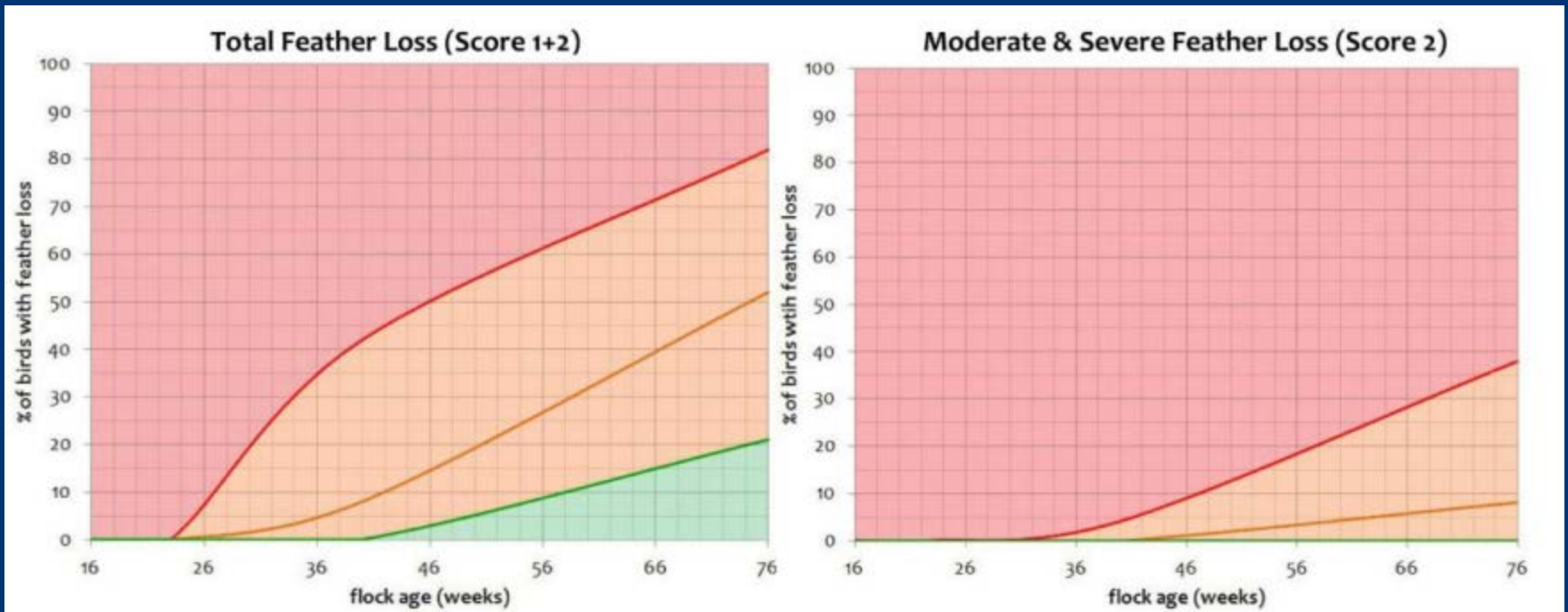
Mortality

FLUCTUATIONS YEAR ON YEAR



Benchmarking

RED & AMBER = ACTION TO PREVENT FURTHER DAMAGE



Thank you!

